

Appendix 13 – Relevant Maps and Figures

Leppington Public School Upgrade

Acknowledgement of Country

The NSW Department of Education acknowledges Dharug Peoples, the traditional custodians of the land on which upgrades to Austral Public School are proposed.

We pay our respects to their Elders past and present and celebrate the diversity of Aboriginal people and their ongoing cultures and connections to the lands and waters of Australia.

The NSW Department of Education is committed to honouring Aboriginal peoples' cultural and spiritual connections to the land, waters and seas and their rich contribution to society.

The NSW Department of Education recognises that by acknowledging our past, we are laying the groundwork for a future that embraces all Australians; a future based on mutual respect and shared responsibility.

1. Relevant Maps and Figures



Figure 1: Aerial view of the site (source: Google Maps)

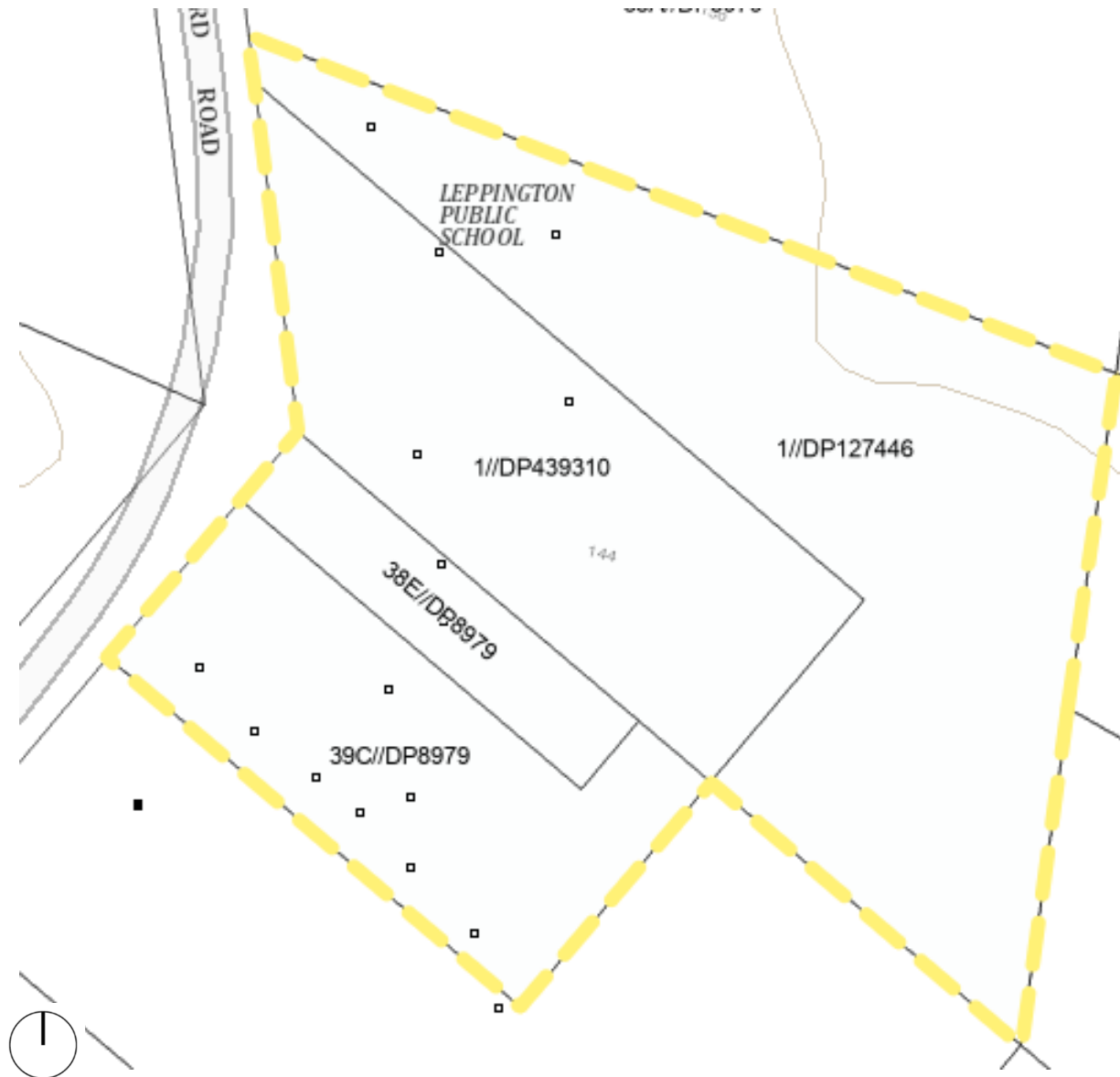


Figure 2: Subject site allotments (Source: NSW Planning Portal eSpatial Viewer)

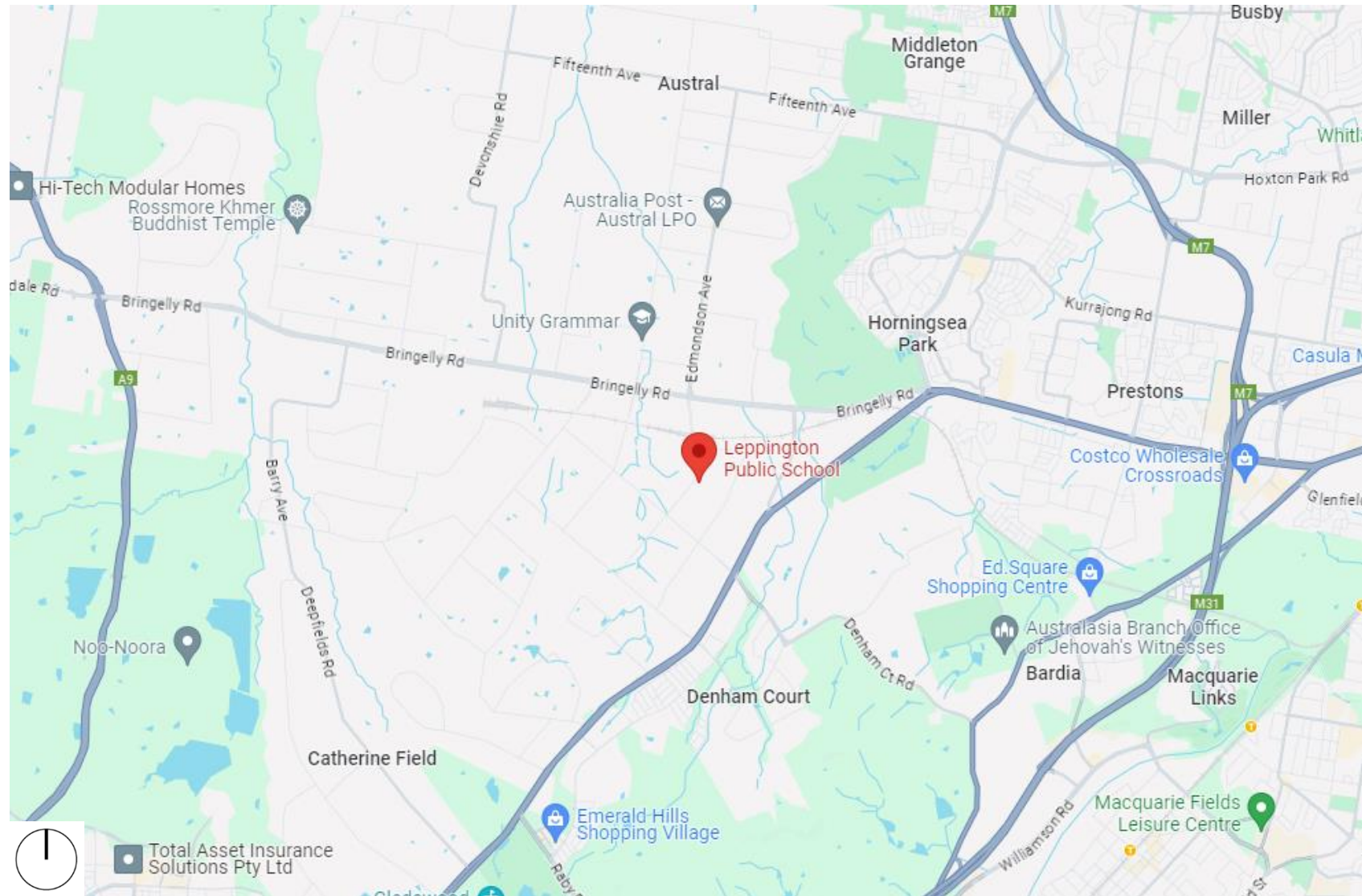


Figure 3: Regional context map, site identified with red marker (Source: Google Maps)

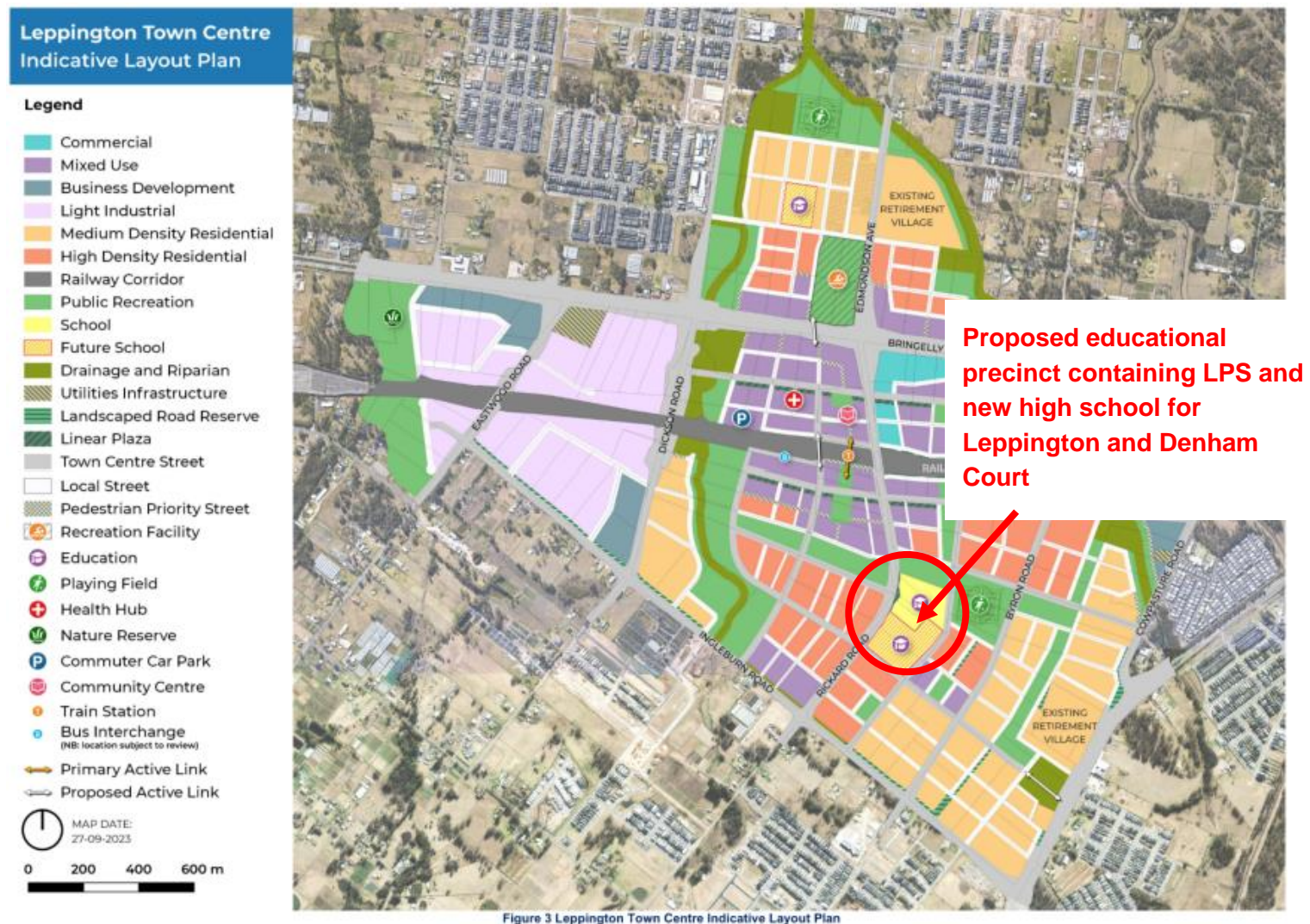


Figure 4: Draft Leppington Town Centre Indicative Layout Plan (source: NSW DPHI)



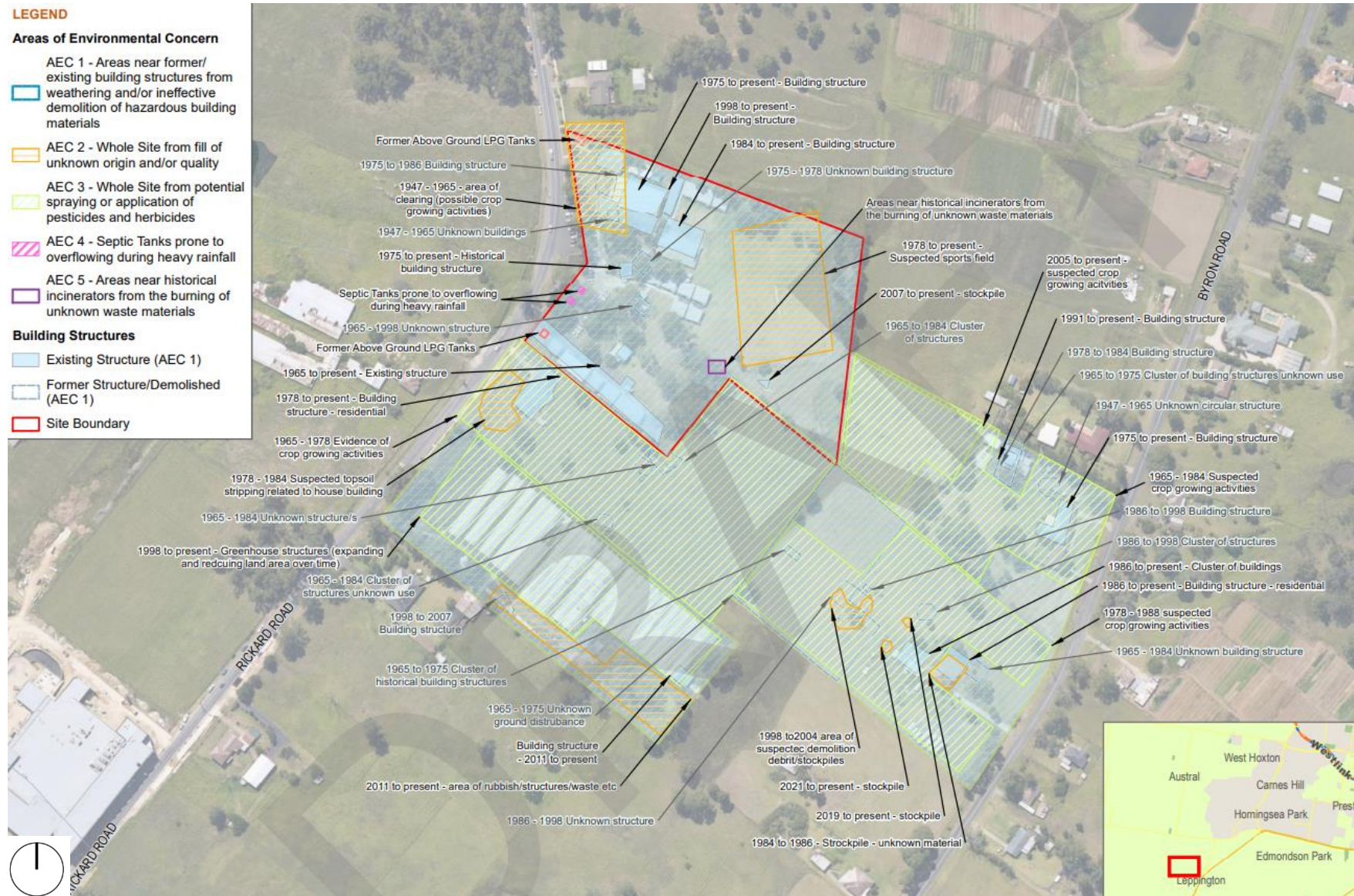
Figure 5: Locally listed heritage item in southern part of the site (source: NSW Planning Portal)



Figure 6: Heritage curtilage identified in shading (Source: EMM)



Figure 7: Site vegetation survey outcomes (Source: ERM)



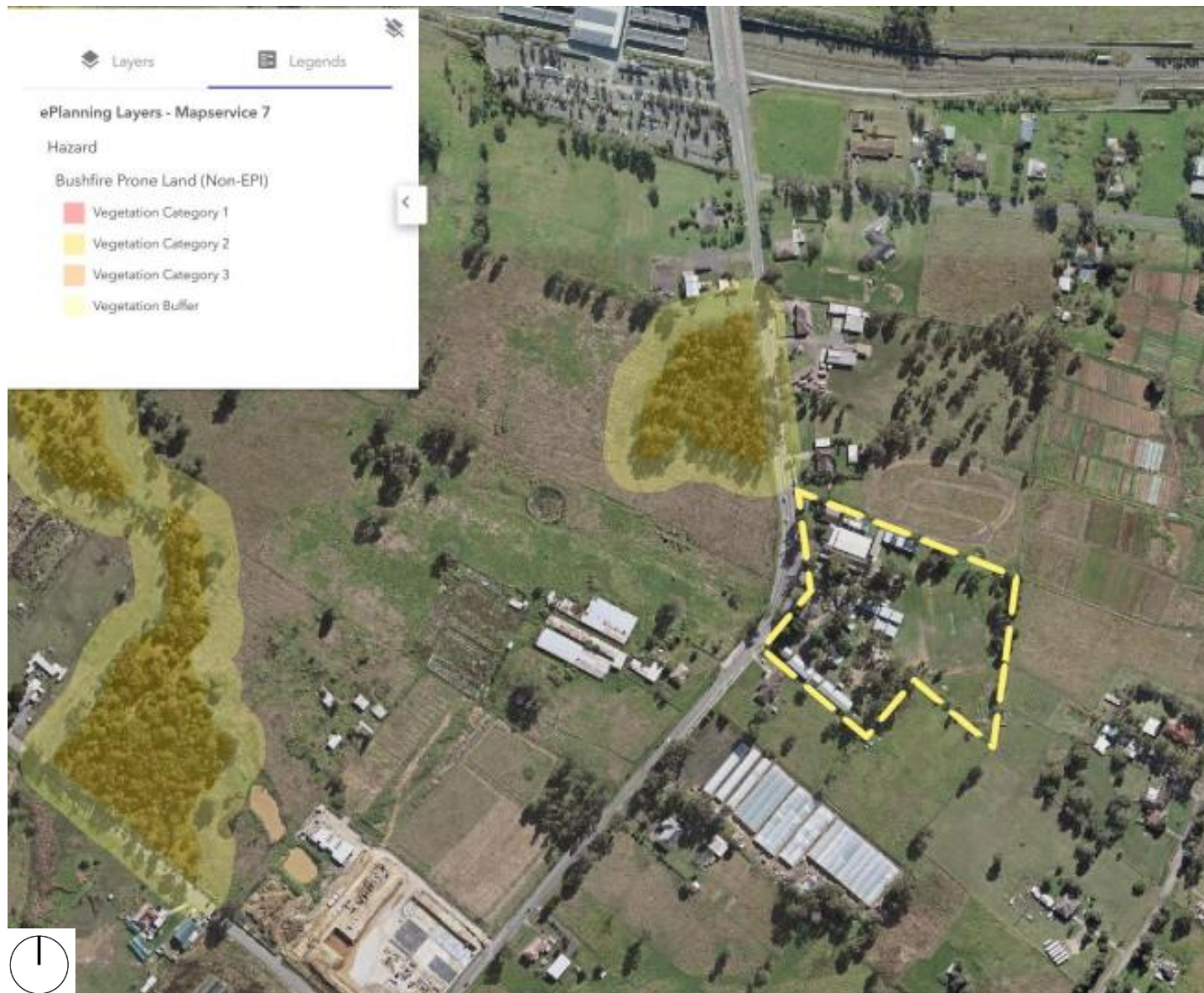


Figure 9: Bushfire Mapping (Source: NSW Planning Portal)

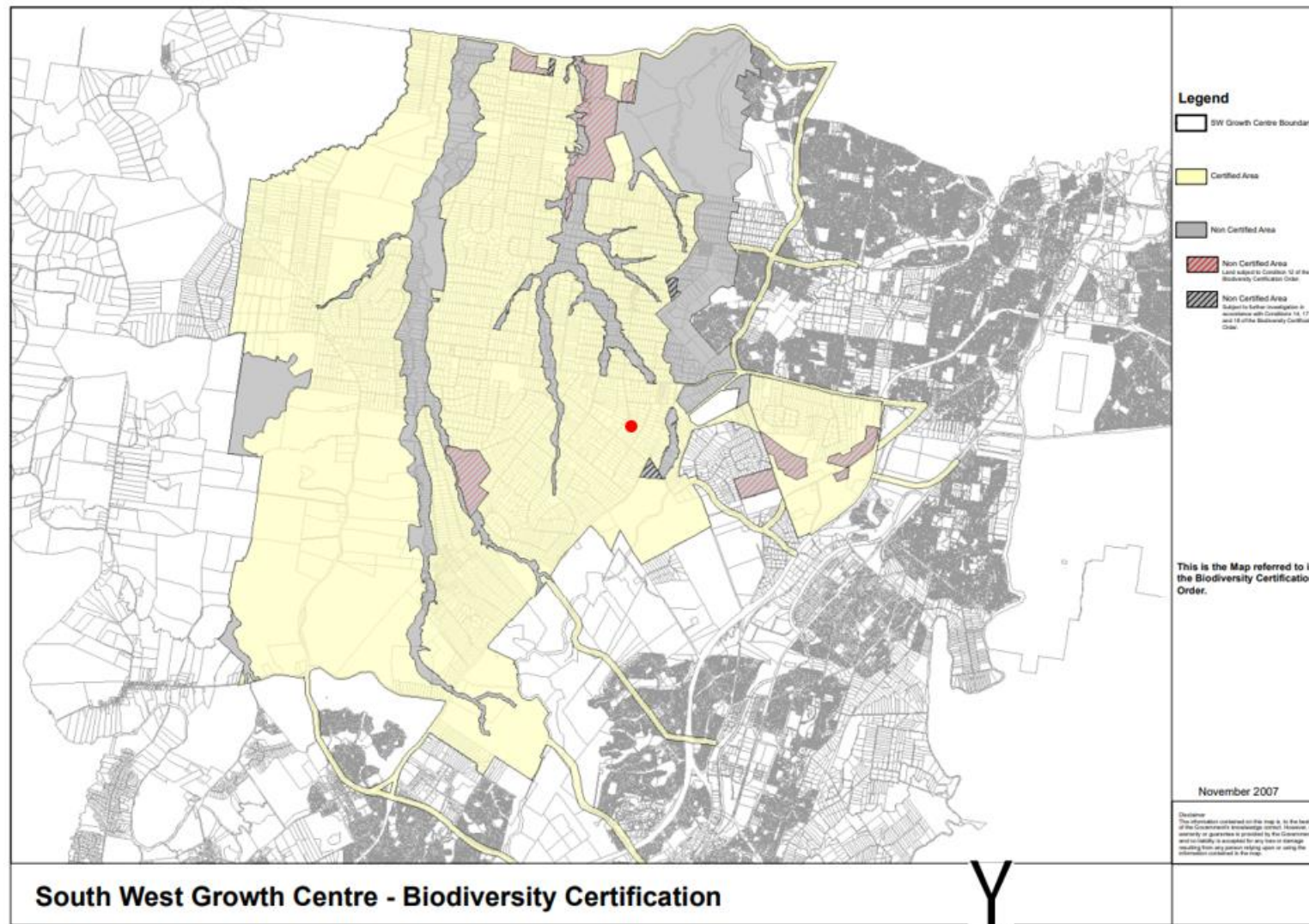


Figure 10: SWGA Biodiversity Certification Map with site identified with red dot (source: Biodiversity Certification Order)



Figure 11: Hydroline Mapping (Source: SEED)

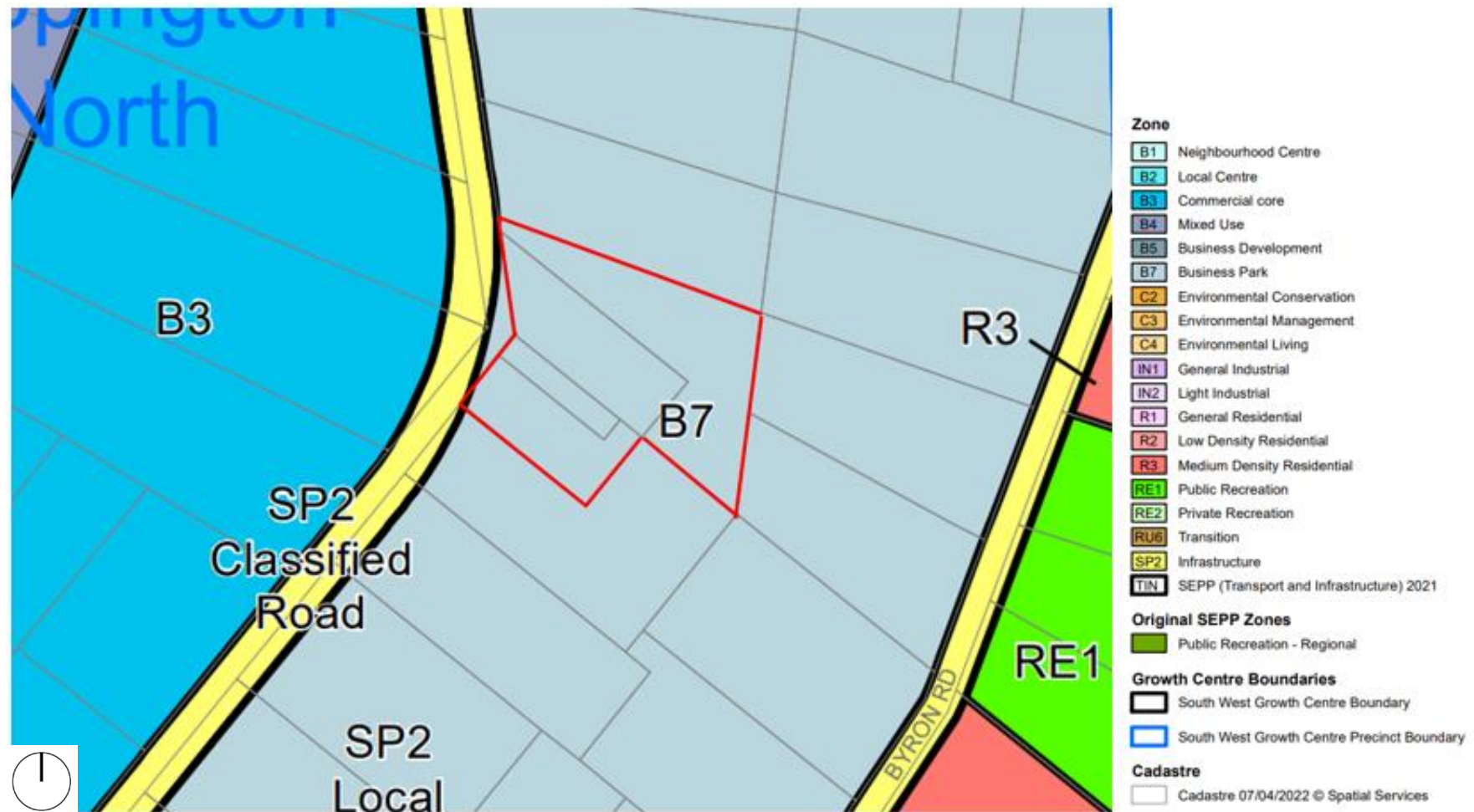


Figure 12: Land use zoning map, site outlined red (Source: NSW Planning Portal Spatial Viewer)

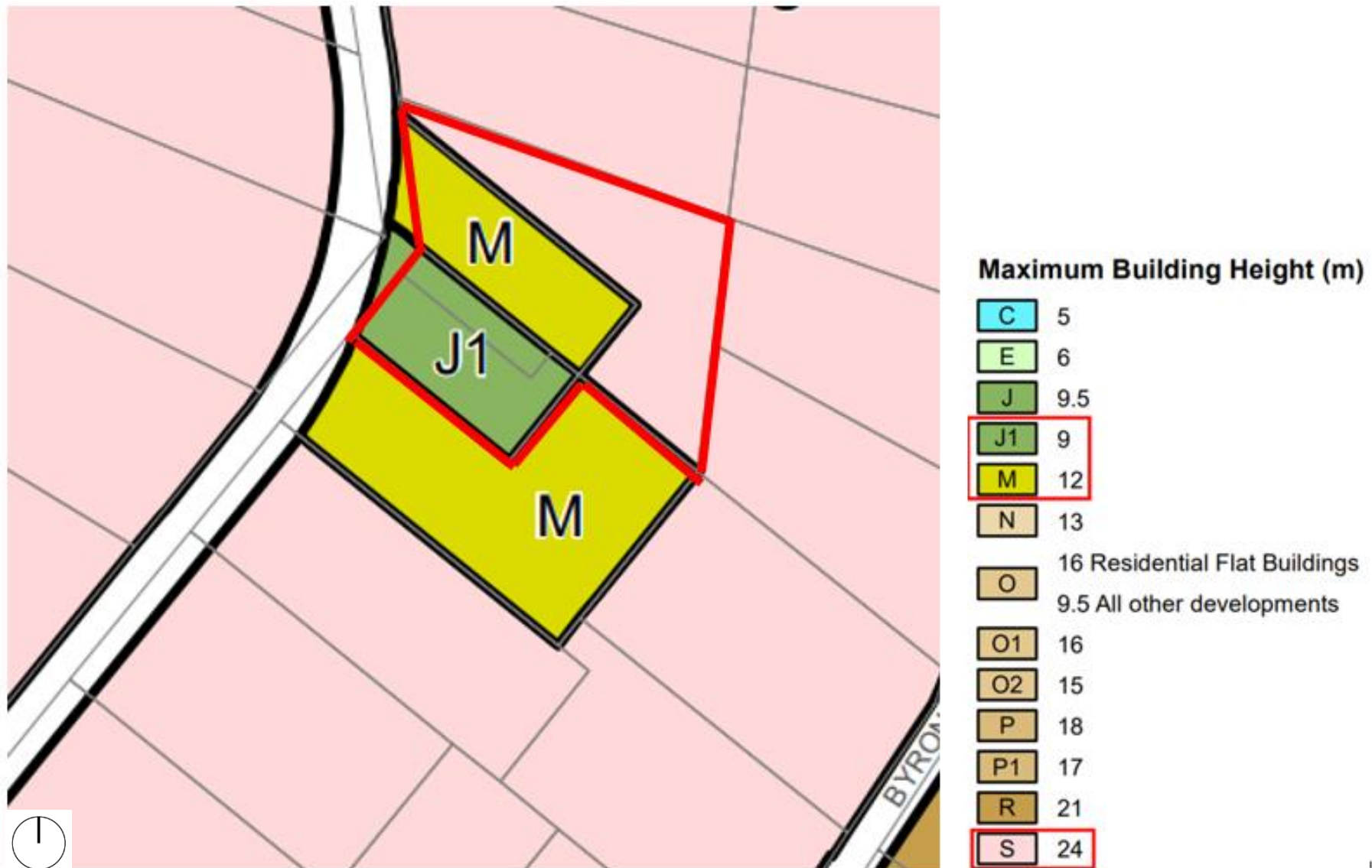


Figure 13: Height of buildings map excerpt (source: NSW Planning Portal Spatial Viewer)

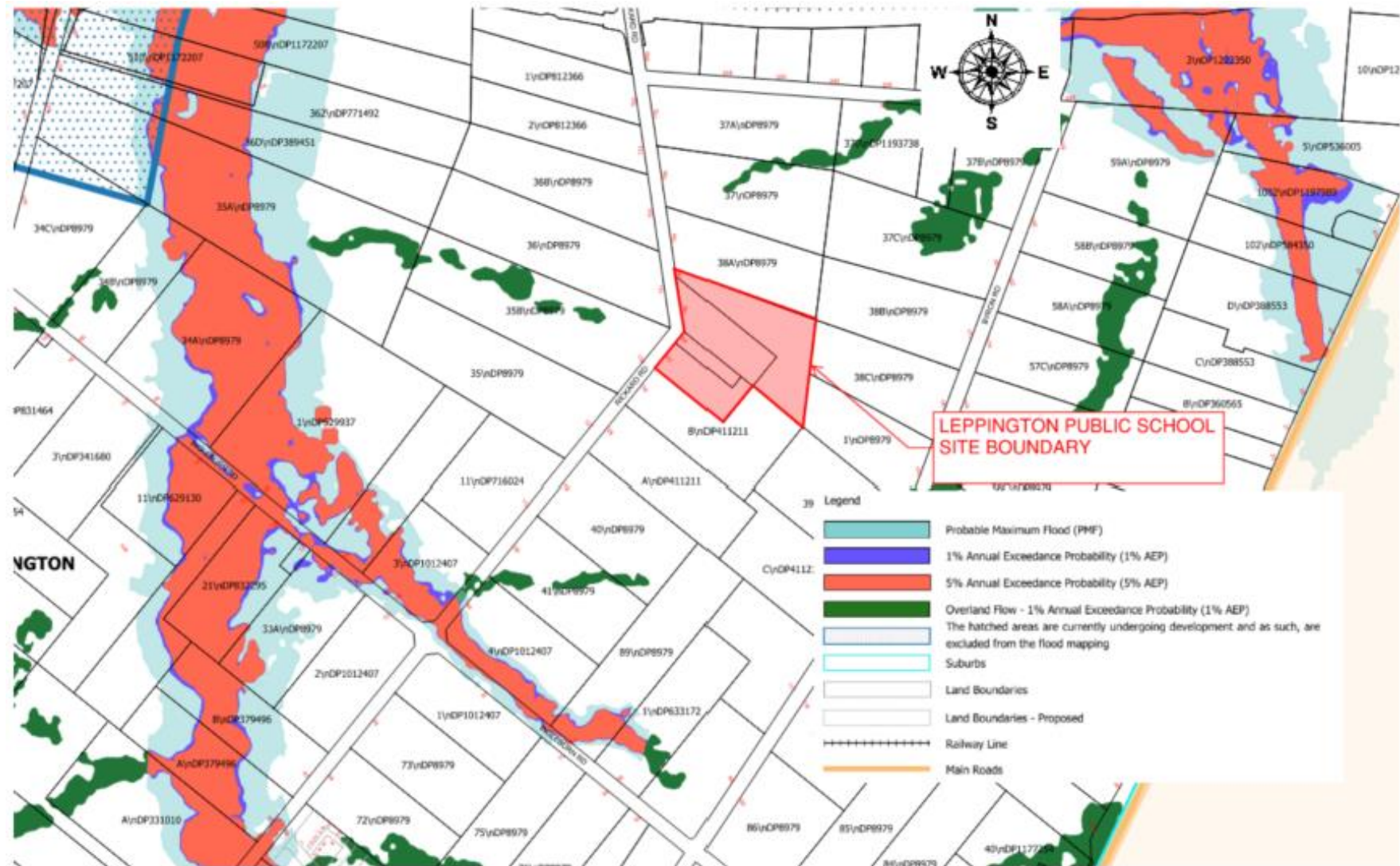


Figure 14: Excerpt from Upper South Creek Floodplain Risk Management Study and Plan (source: Stantec)